

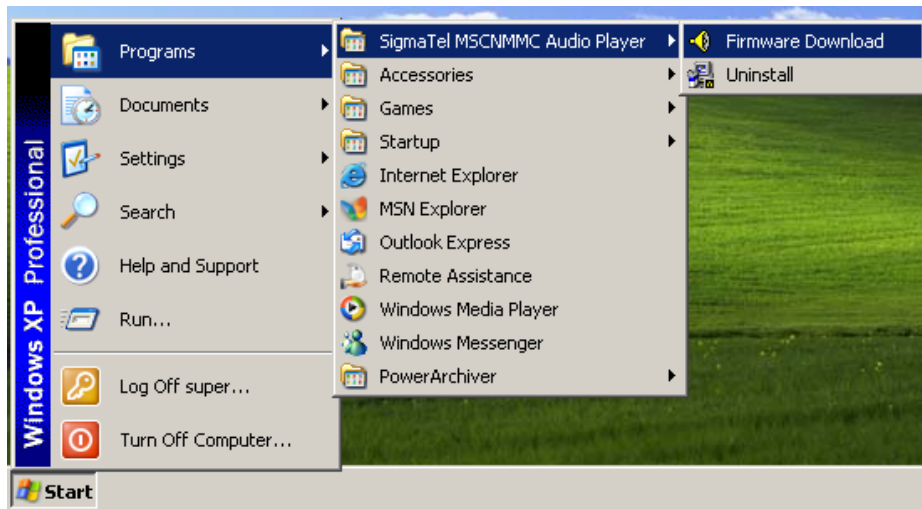
Fixing steps for the MP3 Player when no power-on

Model : Zling Slot

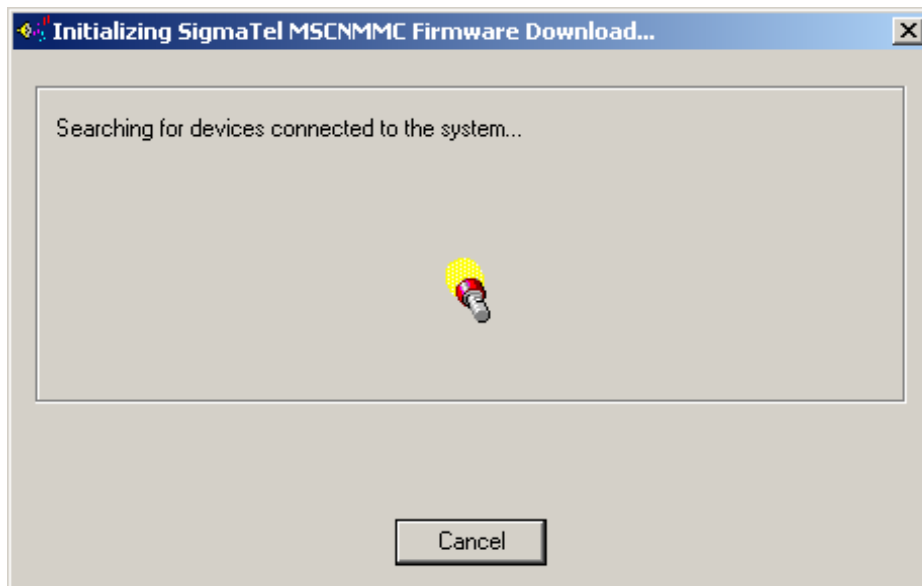
Rev : A3

For Windows 98 / 98SE / ME / 2000 / XP

1. Do NOT connect MP3 player to the computer
2. Insert CD ROM driver to install the application for Windows ME / 2000 / XP. After installation procedure, RESTART the computer.
3. Click Start → SigmaTel MSCNMMC Audio Player → Firmware Download



You will get the following screen



4. Press “Play” button and connect the USB cable into the PC at the same time ; hold the “Play” button until you get the follow screen. (note : Windows will recognize the *Zling slot* player in the first time, it may take time)

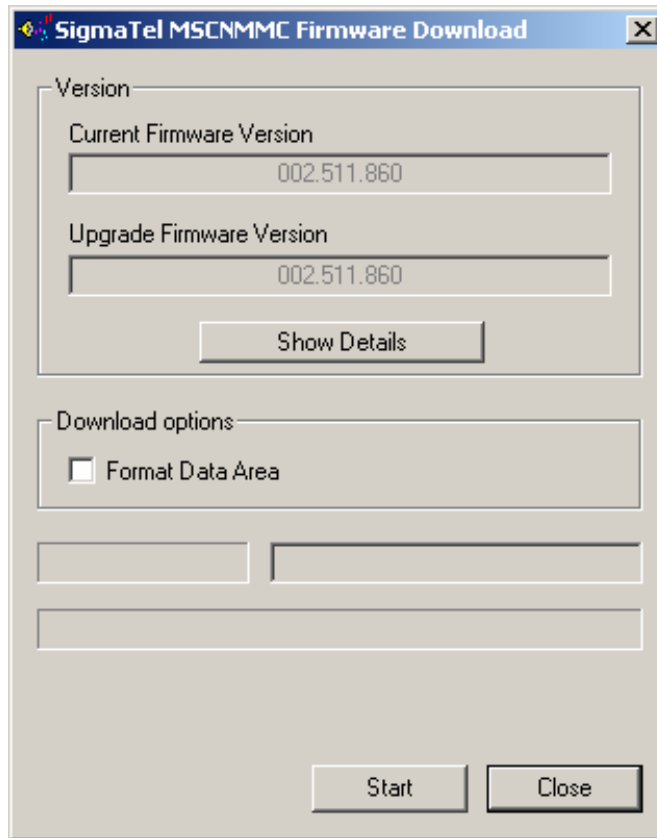


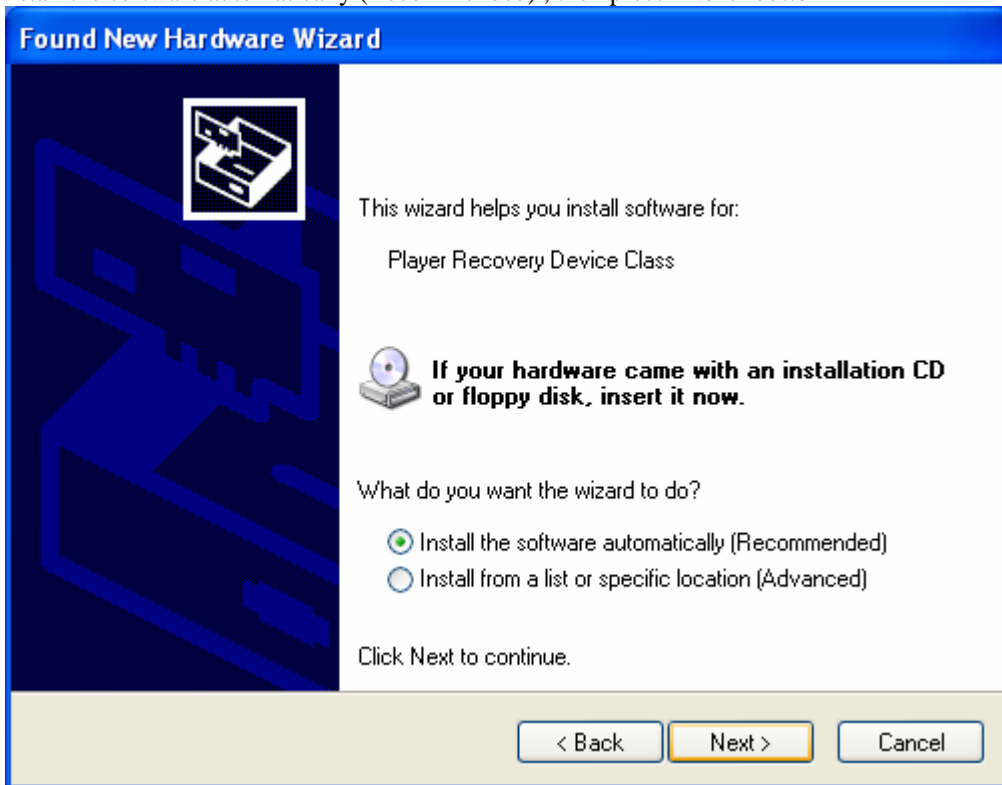
Figure 1

5. For XP /w SP2 user, the recovery driver should be installed as follows
 - a. Select “No , Not this time” , then press “Next” button

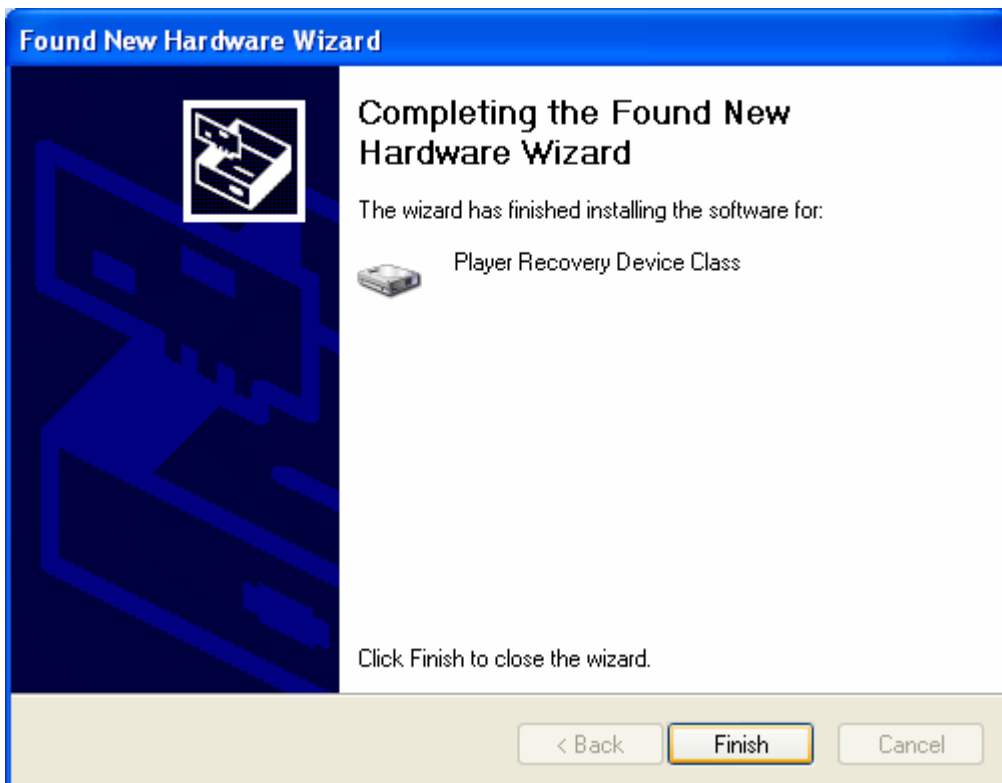


b.

b. Select “Install the software automatically (Recommended)”, then press “Next” button

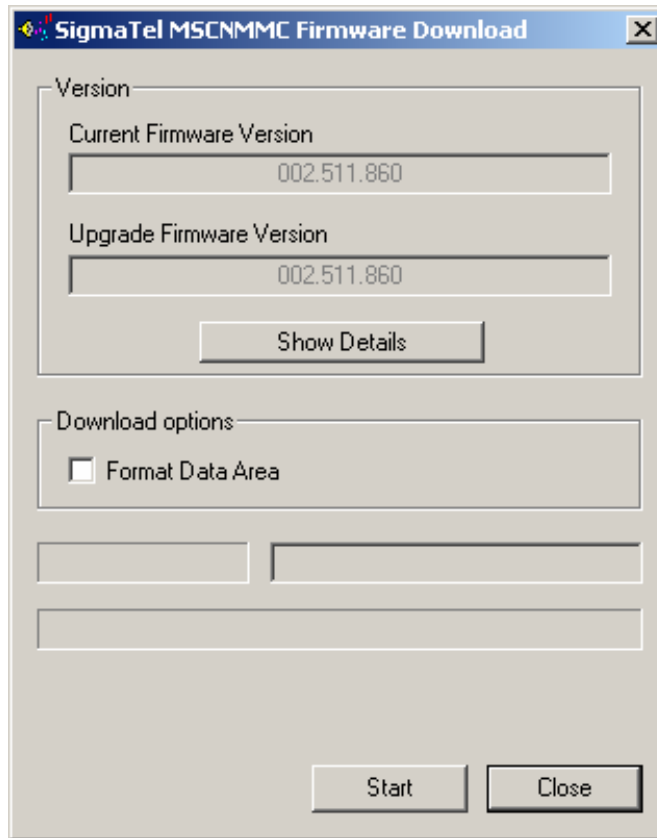


c. Press “Finish” button. The “Player Recovery Device Class” driver is now installed successfully.



d. Then figure 1 will be shown on the screen.

6. Check the box next to the option “Format data area” and Click “Start” button to format the MP3 player. The MP3 player will work properly after finishing all the above steps.



*** THE END ***