

Fixing steps for the MP3 Player when no power-on

Model : Zling U2 / Zling U2 V2

Rev : A5

For Windows 98 / 98SE / ME / 2000 / XP

1. Do NOT connect MP3 player to the computer
2. Extract the **Zling U2** firmware into a folder (e.g. c:\firmware)
3. Install the firmware upgrade tool, run the “c:\firmware\setup.exe”
4. Click Start → SigmaTel MSCN Audio Player → Firmware Download



You will get the following screen



5. Remove the internal battery from the mp3 player.
6. Press “**Play**” button and connect the USB cable into the PC at the same time ; hold the “**Play**” button until you get the follow screen. (note : Windows will recognize the **Zling U2** player in the first time, it may take time)

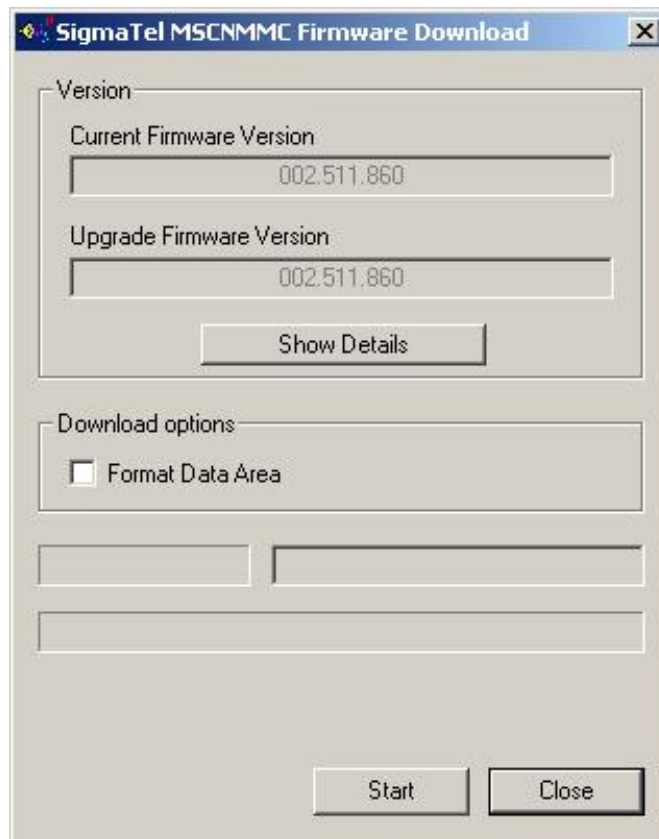
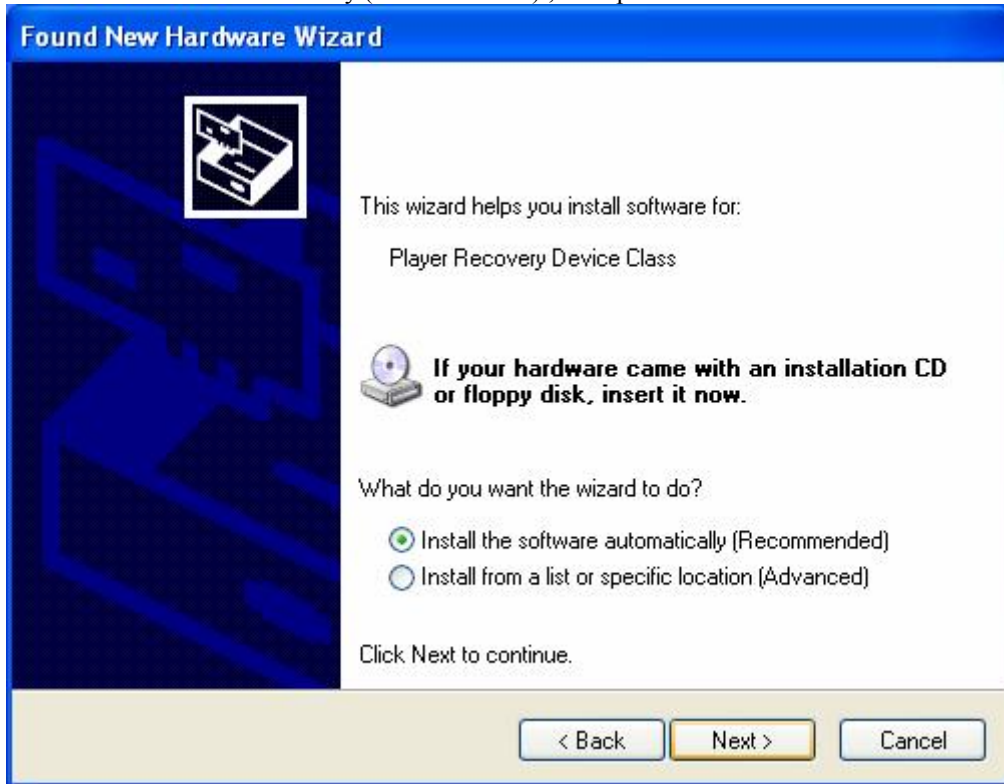


Figure 1

7. For XP /w SP2 user, the recovery driver should be installed as follows
 - a. Select “No , Not this time” , then press “Next” button



b. Select “Install the software automatically (Recommended)”, then press “Next” button

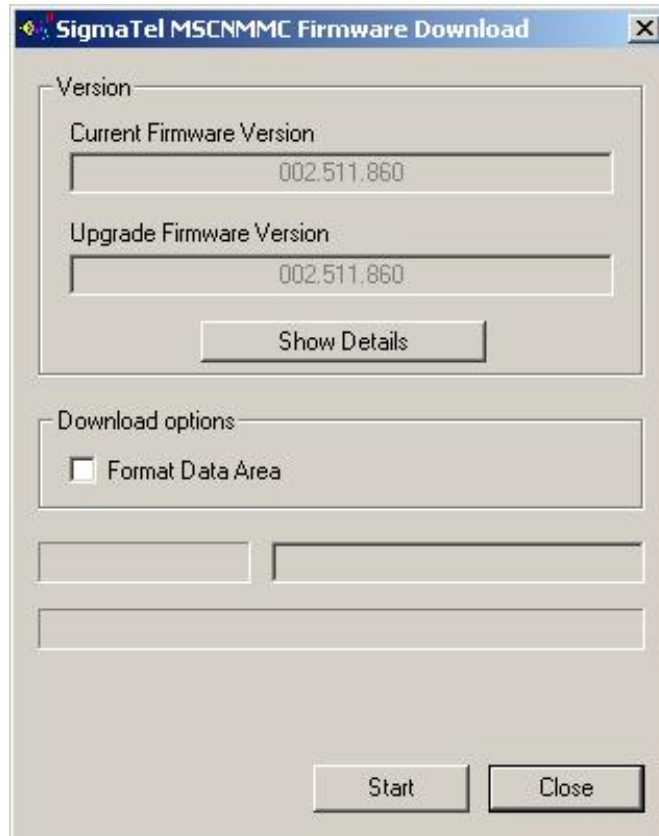


c. Press “Finish” button. The “Player Recovery Device Class” driver is now installed successfully.



d. Then figure 1 will be shown on the screen.

8. Check the box next to the option “Format data area” and Click “Start” button to format the MP3 player. The MP3 player will work properly after finishing all the above steps.



9. Press “Close” button

10. Safely remove the *Zling U2*

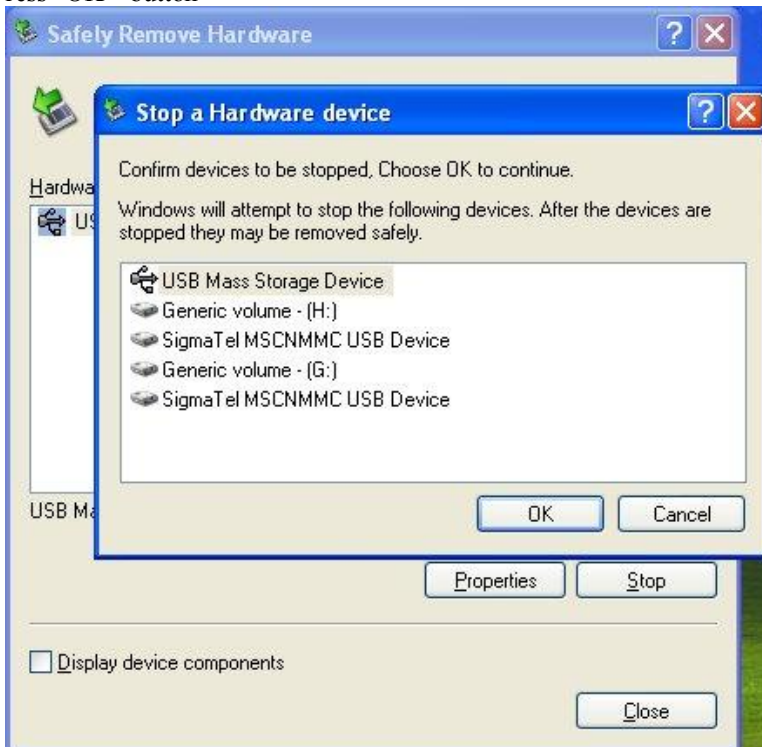
- i. Double click bottom right icon



b. Click the “USB Mass Storage Device” , and then press “Stop” button



c. Press “OK” button



d. Press "Close" button



11. Now, the *Zling U2* can be removed from the PC

*** THE END ***