

# **Zling Clippy V3**

## **MP3 Player**

### **User's Manual**

V1.0

Thank you for using **Zling Clippy V3** MP3 digital player. This User's Manual provides detailed instructions and illustrations to help you enjoy your new player. To ensure proper operation, please read the manual carefully.

## **Features**

- Support MP3 and WMA Audio Files
- Equalizer with 7 Presets
- Selectable Play Modes
- Single Colors LCD Display
- Voice Recording / FM Recording
- FM Radio
- Alloy Clip for Easy Wearing
- Support Multiple Music Folders
- Support Public/Security Partitions
- Bootable in Win98/SE/ME

## **Specifications**

Music Format	:	MP3, WMA
Bit Rate	:	32K bps - 320K bps
Equalizer	:	Natural/ Rock/Pop/Classic/Soft/Jazz/Bass
Play Mode	:	Normal/Folder/Repeat One/Repeat All/Repeat from Folder/Random/Intro
Voice /FM Recording	:	8 hours on 128MB of high quality voice recording
Display	:	LCD
PC Interface	:	USB 2.0(High Speed)
Power Supply	:	Built-in Li-ion battery
Earphone	:	Stereo headphones
FM Radio	:	87Mhz – 108Mhz
Signal to Noise Ratio	:	> 85dB
Power Output	:	5mW + 5mW
Frequency Range	:	20Hz - 20KHz
Dimensions	:	65mm (L) x 30mm (W) x 15mm (H) (without clip)
Weight	:	25g (without battery)
Language	:	English, German, Traditional Chinese, Simplified Chinese, Japanese, Korean, Portuguese, French, Italian, Spanish, Dutch, Swedish, Denmark, Polish, Hungarian, Czech, Russian, Thai
Operating System	:	Win98/98SE/ME/2000/XP/Mac OS 8.6+

***All specifications are subject to change without notice.***

## Minimum System Requirement

Windows 98 / 98SE, Windows ME, Windows 2000 , Windows XP, Windows Vista  
One available USB Port  
CD ROM drive required for driver installation (Windows 98 / 98SE only)

## Driver Installation

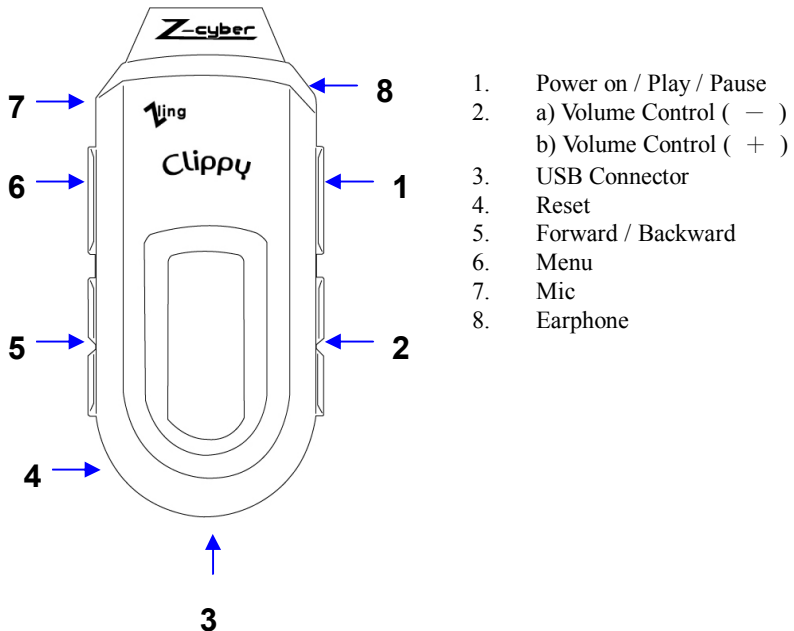
### Installation Procedure for Windows 98 / 98SE

Do not connect the MP3 player to computer before software installation.  
Insert CD ROM driver and run "Setup.exe" from "Zling Clippy V3/Application" folder.  
Connect the MP3 player to the computer with provided USB cable.  
After installation, you will see "Removable Disk" icon in "My Computer".

### Installation Procedure for Windows ME / 2000 / XP / Vista

Windows ME / 2000 / XP already has driver built-in. support.  
Connect the MP3 player to the computer with provided USB cable and power on.  
Computers will automatically detect the player and install necessary driver.  
After installation, you will see "Removable Disk" icon in "My Computer".

## Getting Started



## Operation

Press and hold PLAY button to turn on the player. Press again to start playing music. If you are not in the Music mode(MSC), press MENU for 2 seconds to enter Main menu. Press << or >> select Music and press MENU to enter Music Mode.

\*To turn off the player, press and hold the PLAY button again.



Music

### 1 Play Menu

During music playing, press MENU for 1 second to access Play Menu. You will see the Repeat Mode, EQ Mode, Tempo Rate and A-B Replay Mode, Replay Time and Replay Gap below. Press << or >> and press MENU to select.

#### 1.1 Repeat Mode

Press << or >> to select the desired option and press MENU to confirm.

- Normal : play all files in sequence
- Repeat One : repeatedly play a single file
- Folder : play all files of a folder
- Repeat Folder : repeatedly play all files of a folder
- Repeat All : repeatedly play all files in the player
- Random : randomly play all files in the player
- Intro : first 10 seconds of each file will be played one by one as a title preview

#### 1.2 Equalizer

Press << or >> to select the desired option and press MENU to confirm.

NOR ROCK POP CLAS SOFT  
Natural

NOR Natural  
ROCK Rock  
POP Pop  
CLAS Classical  
SOFT Soft  
JAZZ Jazz  
DBB DBB > Bass

#### 1.3 Tempo Rate

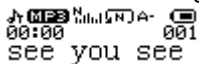
To select quick or slow speed of playing files:

Press << or >> to adjust the play speed.



## 1.4 Replay

It includes: A-B segment repeat, follow and read.



### 1.4.1 A-B Segment Repeat Mode

1. Select the A-B replay.



2. When “A-” start blinking, press >>once while playing a track to mark the beginning of section where you want to start (A).
3. When “B” start blinking, press>> again to where you want the section to end (B).  
It will repeat the marked section (A=>B) continuously.



To cancel the operation, press MENU.

## 1.5 Replay Time

To set how many times the file replays.

## 1.6 Replay Gap

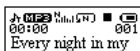
To set how many seconds two files are separated.

## 1.7 Lyric Display



It supports LRC V0.2 format file to display lyric on the LCD screen while music plays.

### Displaying Lyric:

1. Copy your lyric file to the player (make sure lyric file has the same file name with music file), and lyric will automatically displays.



Note:

- If lyric exists, the icon  will change to .
- If there is no lyric file, ID3 tag information will appear.
- If the music file has no tag information, music file name will be displayed.
- Do not exceed 1000 bytes words in Lyric file.

## 2. Main Menu

Press MENU for 2 seconds to access the Main Menu.

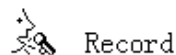


Note:


You can access the Main Menu by press in the MENU for 2 seconds from anywhere in the submenu or during music playing.

### **2.1 Record Mode**

It records voice through internal microphone. There are three states of recording: Record, Pause and Stop.



#### 2.11 Recording Voice:

1. Press  (REC) to start recording.
2. Press >/II to pause.
3. Press >/II for 2 seconds to stop and save the recording.

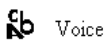
In the Record Mode, you can access submenu by pressing the MENU for 1 second. You will see the FINE REC, LONG REC, FINE VOR and LONG VOR. Press << or >> and press MENU to select.

Note:

- Fine mode uses 32k bit rate that will have better recording quality but shorter recording time. Long mode uses 8k bit rate that will have longer recording time but not as good quality as in Fine mode.
- In VOR mode, if there is effective sound, record will continue; if no effective sound, the player will be in the pause state of recording and show waiting icon.
- If the recording time exceeds 60 minutes, time will display as hh : mm.
- If the low power situation appears (including low battery power in LCD), the player will stop recording and save the record file. Then you should charge the battery at this moment.
- Recording file will be saved in the folder named RECORD generally. But if recording file exists under a folder, you can select that folder to save recording file.

#### 2.12 Playing Record File:

1. Access Voice Mode



2. Select the voice playing record mode.
2. Press << or >> to select the record file.
3. Press >/II to play.

## 2.2 Voice Mode

When playing recorded file, you can press MENU for 1 second to access Voice Mode. Press << or >> to select Repeat Mode, Tempo Rate, or A-B Replay while music plays.

### 2.21 Repeat Mode

Press MENU to access the repeat mode sub-menu.

### 2.22 A-B Replay

It only has A-B segment repeat, but no follow and read.

### 2.23 Tempo rate

To select quick or slow speed of voice playing between -8 to 8.

## 2.3 FM Radio

Your MP3 player has a built-in FM radio receiver. And you can record a FM program.



FM

1. Access FM Mode(FM) and press MENU to enter.
2. Press << or >> to select a FM channel.
2. Once a channel is found, press MENU to enter the sub-menu. You will have option to select; Save, Delete, Delete All, Normal band, Japan band, Long REC and Fine REC.
3. Press MENU to select and press again to exit.

## 2.4 System Setting

It gives you options to change the way your player displays, records and plays the files stored.

Press the Forward Button or Backward Button to select the desired setting and press MENU to confirm.



System

### System Time

To set system time:

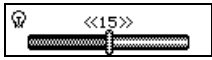
1. Press + / - to set year/month/day
2. Press << or >> to change data
3. Press MENU to confirm.



### **Backlight Time**

To set the duration of the backlight staying on the LCD screen:

1. Press << or >> to adjust.
2. Press MENU confirm.



Note : The backlight will be always on if the value is “0”

### **Light color**

To select backlight color among White, Red, Green, Yellow, Blue, Cyan, Purple and seven colors.

Press << or >> to select and press MENU to confirm.

### **Languages**

To select the language for the LCD display:

Press << or >> to select different languages.

### **Auto-Off**

#### Off-time

If no click at the stop mode within the setting time, the player will turn off automatically; if select 0 second, it will never be auto-off.

#### Sleeping Mode

After the lapse of preset sleeping time (min), the player will turn off automatically.

### **Replay Mode**

To set the replay format:

#### Manual Replay

During the A-B Replay, set the stop point manually.

OR

#### Auto Replay

During the A-B Replay, the stop point is set automatically. It is applied to listen to recitation.

### **Contrast Setting**

To adjust the LCD contrast level (1-15).

### **Online Mode**

To select the player to show either Multi Drive, Normal Drive or Encrypted Drive in the computer.

Note: The player can be formatted with partitions. Please read the “Partition and

Encrypt” section below.

## ● Memory Info

To check the total capacity of the disk.

## ☒ Firmware Upgrade

To improve the function of the Player, you may do the firmware upgrade:



Firmware upg

1. Access the Main Menu, then select System Setting.



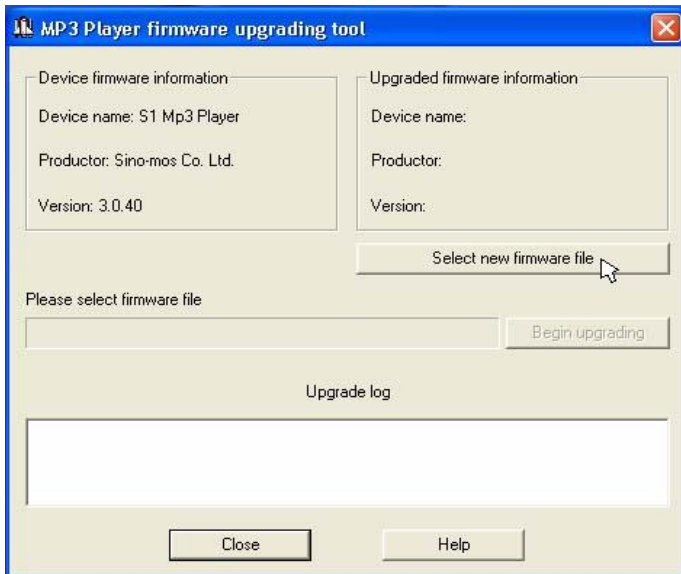
System

2. Select Firmware Upgrade and press MENU to confirm.



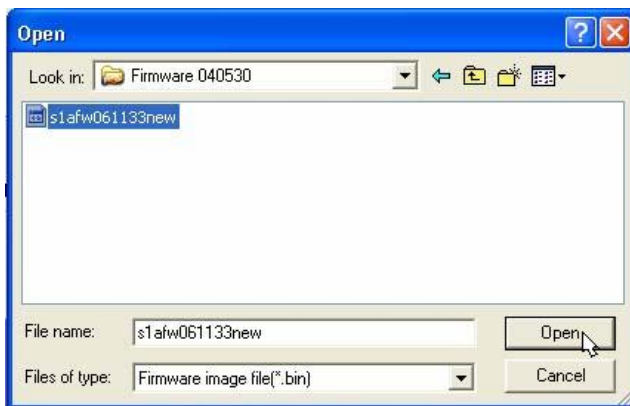
3. Connect the Player to the computer with provided USB cable and power on.

4. Run the Firmware Upgrading Tool, then click “select new firmware file” button.

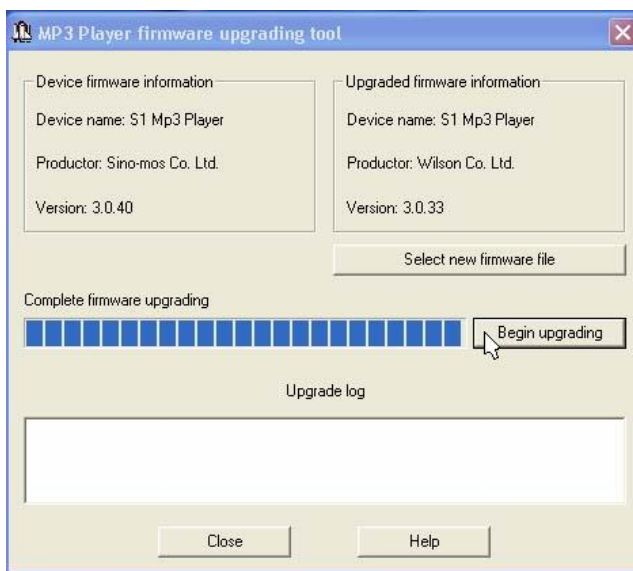


5. Click “Open” button to select the new firmware program.

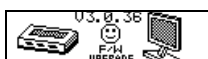
(The firmware can be found in the installed CD or downloaded from our website.)



6. Click “Begin upgrading” Button to start for upgrading the system.



7. When finishing the upgrade, the following diagram will be displayed on the LCD screen:



#### Quit

Quit the interface.

## 2.6 Other Settings

### 2.61 Programming Folder List

To manage all files easily, you can make and name individual folder to store different files. Plug the player to your computer and create folders to the player. For example, you can create and name different Music folders and Voice folders to store music files and voice files.

1. During Music mode or Voice mode, you can access the folder list by pressing MENU for 1 second. And you can enter folder submenu from there.

```
┌─┐ ROOT
└─┘ Twins
```

2. Use the << or >> to select the desired folder, and press MENU to confirm.

### 2.62 Deleting File

To delete files in Music Mode and Voice Mode:

1. Press << or >> to select “Delete File” or “Delete All”.

```
┌─┐ ┌─┐ ┌─┐ ┌─┐
└─┘ └─┘ └─┘ └─┘
Delete file
```

2. When the [Delete File] menu appears, use << or >> to choose Yes or No.

```
┌─┐Delete file? ┌─┐YES┐
└─┐pretty boy M&M└─┘
┌─┐Delete file? ┌─┐NO┐
└─┐pretty boy M&M└─┘
```

Note :

“Delete All” means all the files in the chosen List will be deleted.

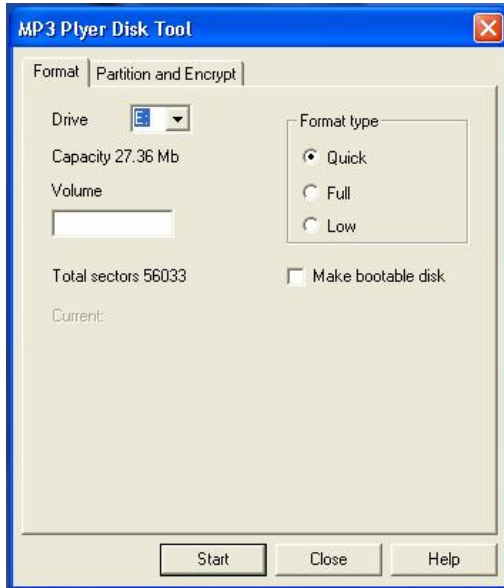
You can use this MP3 player as normal USB Drive. It supports Public and Security partitions that allows you to store your important data with password protection. In addition, you can also format it to be bootable under Windows 98/98SE/ME.

### 2.63 Partition and Encrypt

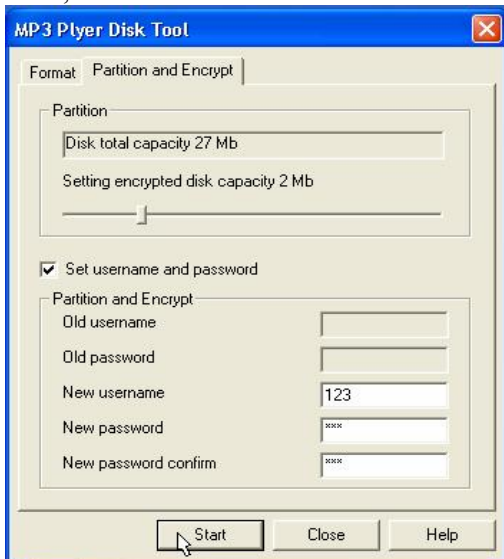
To divide the USB disk into two parts:

1. Connect the Player with the computer with the USB cable.
2. Run the MP3 Player Disk Tool.

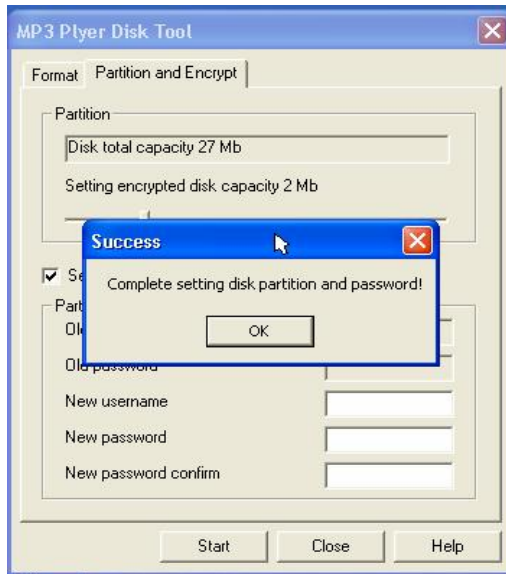
After filling in all the items on the “Format” menu, click “start”.



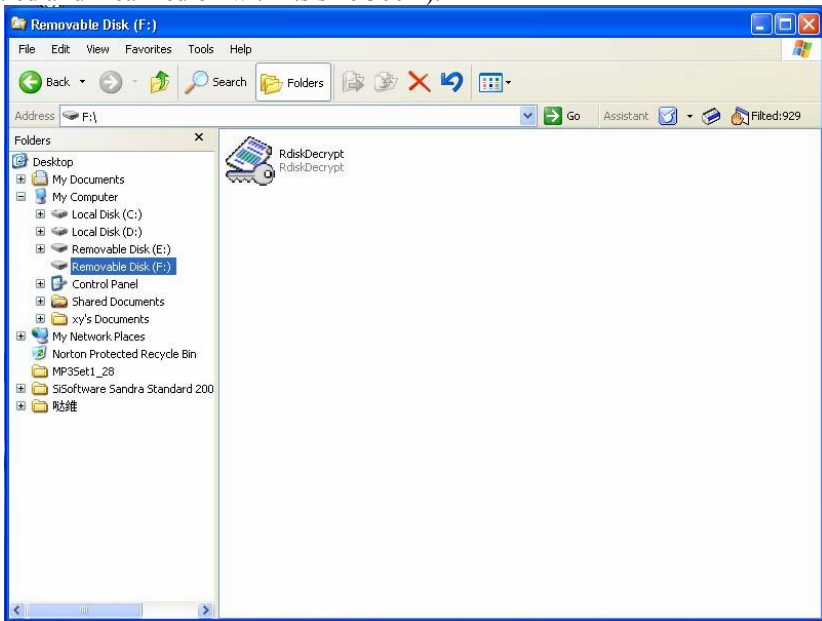
3. Access the “Partition and Encrypt” menu.  
After input all the items, click “start”.



4. The setting has completed. Click “OK”.



5. There are two disks. Open the second one, which consists of 3 documents. (2 concealed and 1 carried on with its size 300K).



6. Carry on the document "RdiskDecry.exe", and input the username and password.



Note:

- The operation of dividing one disk into two parts will delete data. Please store them before the operation.
- Don't miss your username and password. Otherwise you can't complete the removable disk decryption with the password and will lose the data.

## **Trouble Shooting**

<b>Symptom</b>	<b>Possible Reason</b>	<b>Actions</b>
No Power	Check whether the battery is exhausted.	Recharge the battery.
No Sound from the Earphones	Check whether the jack is detached from the unit.	Re-install the earphones again.
	Check whether the VOLUME is set to "0".	Increase the volume.
	Check whether the battery is exhausted.	Recharge the battery.
	Check whether the plug is contaminated / oxidized.	Clean the jack.
	Corrupted MP3 or WMA file.	Download the files again.
Invalid Character on LCD Screen	The language setting is not correct	Select the correct language
	The language isn't supported.	Visit our website to see whether a new revision firmware is released.
Fail to download or upload of MP3 / WMA / WAV file	Check whether the battery is exhausted.	Recharge the battery.
	Check the connection of USB cable.	Re-plug the cable at both ends.
	Damaged USB cable.	Replace a new USB cable.
	Memory is full.	Release some memory space by deleting some files.
Cannot Record Voice	Memory is full.	Release some memory space by deleting some files.

## **Precautions**

1. When battery level is too low, it will power off automatically. You will need to recharge the battery.
2. The USB Disk can be hot unplugged if no write action is being performed. However, if data has been moved to the USB Disk, then Eject or Safe removal action is needed to prevent the data loss. Eject can be used to ensure the data integrity. Under Windows, select the disk icon and click the right button of the mouse, then select “eject”. This will empty the write cache.
3. Below shows the file size that is required for each minute of CD audio converted to MP3 format. The higher the bit rate, the higher the file size is needed.
4. This product may need manual reset under high electrostatic environment.

<b>Bit Rate</b>	<b>File Size (Approximated)</b>
32kbps	236KB/min
64kbps	471KB/min
128 kbps	940KB/min
192 kbps	1.37MB/min
256 kbps	1.83MB/min
320 kbps	2.29MB/min

*Remark: All data for reference only.*

## **Technical Support**

Access latest driver update and software enhancement via our web site:  
[www.z-cyber.net/support](http://www.z-cyber.net/support)

This manual only provides information that may help you operate the player more efficiently. If you are not able to find answers from the troubleshooting above, you can contact us via email at [support@zoltrix.com](mailto:support@zoltrix.com)

## **Disclaimer**

Our company bears no responsibility for any damage arising from improper operation, software, product maintenance, battery change, incidental loss of personal data, or any claim made by any third party. We also reserve the right to make any modification in this manual at any time without prior notice.